

# Contents



<u>Introduction to Farleygreen</u>	02 - 03
<u>Types of Sieving Machinery</u>	04 - 05
<u>Industries We Serve</u>	06 - 07
<u>Small Batch Sieves</u> 200-S, 500-S & the E-400 Range	08 - 10
<u>Check Sieves</u> Sievmaster Slimline Range, Vacuum & Pressure Range, Easilift Range, and the 700-ST	11 - 14
<u>Centrifugal Sieves</u> Sievmaster Rota Range	15
<u>Grading Sieves</u> Sievmaster Multiscreen Range	16
<u>Linear Sieves</u> Sievmaster Segregator Range	17
<u>Ultrasonic System</u>	18
<u>Spares &amp; Accessories</u>	19 - 21
<u>Machine Technical Drawings</u>	22 - 29



## Quality Through Diligent Design

We provide sieving and screening solutions to businesses across the world. Our mission is to deliver distinction in our field of expertise, developing flexible modular design, along with clear and concise communication to distribute our product information.

Utilising the latest software, online platforms, and manufacturing practices we offer the processes, tools, and information that our customers and partners require. This ensures that finding the correctly specified and priced equipment is an easy, composed, courteous, and affable experience.

## We Develop Products for You

We are always adapting to meet our customer's standards with a tailored approach that exceeds customer expectations. Furthermore, our commitment to maintaining strict working practices has been recognised by being awarded **ISO 9001 certification**, guaranteeing a high level of quality throughout the process.

Our customers come to us to solve very specific problems:

- > Lack of confidence with existing suppliers
- > Maintain product quality & throughput to meet set production targets
- > Prevent process contamination
- > Maintain a high standard by fitting certified and traceable equipment

Our machines are designed to address all these issues to give you complete peace of mind.



## The Benefits We Deliver to Our Customers

We deliver a consultative approach to our sales process from initial request all the way through to after sales support. We take the time to understand your requirements and work with you to find the best, most effective product.

- Instead of taking a "one size fits all" approach, we adapt our machines to suit your processes. This provides a more effective machine for our customer's requirements.
- Our machines can be stripped down without tools which ensures there can be no associated contamination or health and safety issues.
- Most of our machines are **ATEX** approved as standard.
- We offer a full range of spares and accessories which will ensure years of problem free operation.
- All equipment is supplied with certified and traceable components as well as relevant documentation to comply with audit procedures.
- All our machines are manufactured in the UK in compliance with both **FDA** & various other regulations such as **CE, UKCA, EC 1935/2004**, and **ANIA**. Optional certificates such as **ATEX** upgrades, **3.1 material certificates**, **EAC, IECEx, UL** are also available.
- We provide a re-meshing service for existing rings or frames, irrespective of the original supplier.

## Machinery Demonstration

We have a range of demonstration machines available for trial if you would rather try first before committing to making a purchase.

You can either make use of our demo fleet with **two-weeks for free**, or use our **in-house testing facility**.

### 01 Request

#### Tell us about your product

Let us know what product you want to test and/or if there is a particular machine you would like to use for the test.

### 02 Assessment

#### Decide what demonstration is right for you

We have three options: visit us on site, send your product directly to us (for us to carry out the test on your behalf), or arrange for a machine from our demo fleet to be sent directly to you.

### 03 Preparation

#### Ensuring the test runs smoothly

Please let us know in plenty of time the date you would like the test to commence, and/or when we can expect to receive your product for testing. If you require a demo machine on site, let us know the dates you need it for.

### 04 Support

#### Getting the most from your demonstration

All tests performed by us will aim to follow your own processing parameters and include a documented report. If you're using machinery on site, your local distributor will support you along the way or refer you to our Testing Engineer for guidance.






# Types of Sieving Machinery

Maintaining a quality-controlled end product is an essential element of nearly all processing industries. We can provide both the sieving equipment and the knowledge to help you improve and maintain your product quality.

Choosing a sieve can be a daunting task, not only are there several manufacturers purporting to provide the answer to your needs, but the choices of differing types, sizes, and configurations make the process even more bewildering. Do you choose new or second hand? Round or square? Buy through an agent or from a manufacturer? Can the supplier support the sale with spares back up? Can they support the sale with engineering back up? Can they supply all those necessary items to ensure that you can connect your existing or new equipment to the sieve?

Is the unit in a hazardous area? All considerations when making that purchasing decision. Then there is the consideration of price, too expensive? Are you getting value for money? Too cheap? Is the quality of the product suspect? Will it last? It sounds obvious, but the first consideration should be: 'what is the sieve to be used for?'.  


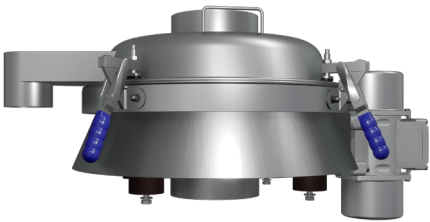
This fundamental consideration is so often overlooked, but ensuring the requirement is correctly specified will narrow down the choice process. Assistance is always available from your Farleygreene distributor for you to evaluate the best options for your application. A machinery demonstration can also be carried out on site or within our test facility to fully prove the process.

## Check Sieving

Check sieves are usually a single screen and typically the fine product that passes through the mesh is kept as good product.

This type of sieve might be chosen to remove lumps, bits of packaging, broken or undersized product, or to make sure no insect eggs get into the final product.

In most applications, a check sieve is either the first machine in a process, preventing contaminants, or the last machine before packaging as a quality check. However, they can still be placed anywhere in the process line.



The Sievmaster Slimline Sieve

## Small Batch Sieving

Not all industries or processes require vast factories or continuous production lines. Batch sieves are recommended for any sieving process where only a small volume of a very short production run is required. Throughput rate may not be a major factor in this circumstance so only a small sieve is required to process a set volume of material.

This type of sieving is still considered a check sieving or grading operation, but it is just on a much smaller scale or not a continuous process.

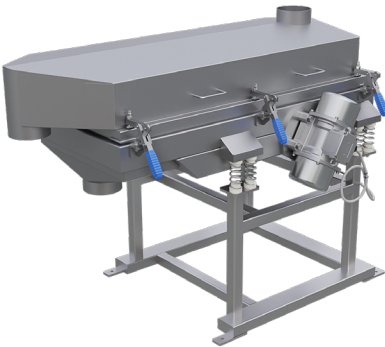


The Sievmaster 200-S

## Linear Sieving

As the name suggests, this arrangement moves the product along a rectangular mesh, rather than a circular one.

The product is not restricted upon the mesh, and it uses gravity as an aid to movement. This type of machine is ideally suited to those products which have a high proportion of oversize material, and require de-dusting or de-watering. The Segregator is especially useful in those areas in the food industry where spices, vegetables, or biscuits need separating from unwanted, broken, or undersized product.



The Sievmaster Segregator Sieve

## Centrifugal Sieving

Centrifugal or Rotary Sieves are designed to provide users with an efficient, dust tight, high throughput machine. Using a set of paddles, the Sievmaster Rota pushes product out through a cylinder of mesh, rotating them at a high speed and applying centrifugal force.

This gives accurate material screening with continuous fine and coarse discharge, especially suitable for high volume sieving, lumpy, sticky, and dusty products. Product is sieved on a continuous basis and very large quantities can be processed quickly.



The Sievmaster Rota

## Grading

A grading sieve is more precise than a check sieve, the goal is to get exact 'cuts' of the product where the particles in each cut are between a certain size. This is usually achieved by passing the product through up to 4 meshes with decreasing aperture sizes.

Multiscreen machines are available in various sizes starting with 800mm and increasing to 1200mm, and 1500mm diameters. Modular in their design, users can easily switch from a single screen with simple fines and oversize, to 3 or 4 cuts.



The Sievmaster Multiscreen Sieve

## Ultrasonic Sieving

The use of an ultrasonic system can provide added benefits when sieving fine powders. The introduction of very high frequency vibration (ultrasonic wavelength) to the mesh produces a fluidising effect to the mesh wires, the theory being that the product 'slips' through the mesh more readily than by normal low frequency vibration.

It is especially useful for products such as toner, or metal powders used in additive manufacturing environments.



The Sievmaster Ultrasonic System



# Industries We Serve

Since 1976 Farleygreene have been designing and manufacturing certified sieving solutions to customers from a wide range of industries. **We supply sieves to almost every industry sector** but in particular to the food and drink, pharmaceutical, chemical, and additive manufacturing industries.

All machine parts can include **full traceability, surface roughness measurements, As Built Drawings** and **FAT testing documentation**.



Food & Drink



Our Sievmaster range has been designed to meet the growing food industry standards (**EC1935/2004, ATEX, FDA**). We have a large range of options available to meet various throughputs without compromising on strict hygienic requirements.



Pharmaceutical



We have worked with companies such as **GSK, TEVA & Pfizer** to support the pharmaceutical industry in the supply of contamination free end products. Our standalone vacuum check screener can be easily fitted in existing process lines to safely grade even the most fragile ingredients in hygienic conditions.

# Brands we work with



Chemical



Our sieving solutions play a key role in the chemical industry to ensure products are validated post process. Through our experience in both liquid and solid processing, our technology has demonstrated its benefits in separating various chemical end products such as solvent based paints.



Additive Manufacturing



Our Sievmaster range can be adapted to meet additive manufacturing requirements. Alternatively, our Sievgen range is used specifically for recycling and validating powders throughout the additive process. These units are designed to reduce downtime and fit seamlessly into both R&D and production environments. Please contact us your local Farleygreene distributor directly for further information on this product range.

Product Specification

Small Batch Sieving

200-S

A 200mm diameter vibratory sieve designed to sit directly on top of a container.

A circular frame supports the sieve and allows ingredients to be tipped into the top and check sieved into a container below.

The Sievmaster 200-S can be used for straining liquids as well as dry ingredients. Different mesh screens for coarse, medium, & fine/liquid applications are available.



sm sievmaster  
by farleygreene

Features & Benefits

- Easy-Clean hygienic design, no crevices
- Conforms to CE, UKCA, FDA, EC 1935/2004, and ANIA regulations
- No tool, quick change screens
- Wet or dry applications
- 0.05 kW (0.1 HP) vibratory motor
- Dust and waterproof to at least IP65
- Open top hopper for ease of dispensing
- All stainless steel body and contact parts
- Low maintenance/running costs – tool free disassembly & minimal servicing

Industries:

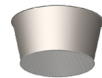


Product Options\*

**Top Dust Cover** - removable top cover with gasket and clamp.



**Top Cone Meshed** - ET5145 adhesive.



**Bench Mounting Kit** - allows the sieve to be free-standing.



**Collection Bin** - wheels available.



\*More options available on request

Typical Materials

- Most food, beverage, chemical powders and granular products
- Liquid separation

Finishes available

- Internal Dull Polish to <0.8 Ra

Certified Technology



Product Specification

Small Batch Sieving

500-S

A small and economically priced sieve that does not compromise on accuracy.

The Sievmaster 500-S suits those needing to sieve products in smaller batches but still requiring a fast, efficient system. The cone shaped inlet allows the operator to easily load a full 25kg sack of product into the sieving area in one go.

Its stainless steel construction makes this machine suitable for use within the most arduous of environments, and the mobile stand provides a simple means of manoeuvring from one location to another.



sm sievmaster  
by farleygreene

Features & Benefits

- Easy-Clean hygienic design, no crevices
- No tool, quick change screens
- Wet or dry applications
- All stainless steel body and contact parts
- Dust and waterproof IP66
- Meets **HACCP, BRC** audit requirements
- Conforms to **CE, UKCA, FDA, EC 1935/2004**, and **ANIA** regulations
- Low maintenance/running costs – tool free disassembly & minimal servicing

Industries:



Product Options\*

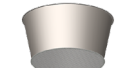
**Ultrasonic upgrade** - eliminates mesh blinding.



**Mesh Deblinding System** - mechanical.



**Top Cone Meshed** - ET5145 adhesive.



**Tote Bin / Container Mounting** - Tray type support system.



**Top Dust Cover** - Removable top cover with vision and access port.



**Underscreen Magnet Assy** - 9000 gauss.



**Upgrade to ATEX zone 22 II 3D.**



\*More options available on request

Typical Materials

- Most food, beverage, chemical powders and granular products
- Liquid separation

Finishes available

- Internal Dull Polish to <0.8 Ra

Certified Technology





Product Specification

Small Batch Sieving

E-400 Range

A modular check sieve with a sack tip or grading configuration.

The Sievmaster E-400 is comprised of a modular sieve stack built on a mobile frame; each stack is designed to be flexible enough to suit requirements such as grading and/or sack tipping.

Primarily aimed at the food, chemicals, and artisan markets, these mobile units can be adapted to meet requirements as they change, or fit different points in a process.

Their modular design means they can be easily adapted by the user for check screening, grade sieving (E-400-GRV), or low volume sack tipping (E-400-STV).

Features & Benefits

- The unit can utilise the STV components to become a sack tipping unit or GRV components to become a grading unit with no other modifications
- Sieve directly into tote bins, drums, or bags
- Bag cut out and internal sack rest grid (STV components)
- Conforms to CE, UKCA, FDA, EC 1935/2004, and ANIA regulations
- Dust and waterproof to at least IP65
- No tool, quick change screens
- Wet or dry applications
- All stainless steel contact parts
- Mobile support frame
- Easy-Clean design, no crevices
- Low maintenance/running costs – tool free disassembly & minimal servicing

Industries:



Product Options\*

Ultrasonic upgrade - eliminates mesh blinding.



Addition of underscreen magnet assy- 9000 gauss.



Continuous processing of 2 fractions - Oversize / fines.



Mesh debinding - Mechanical.



Continuous processing of 3 fractions - Oversize / cut 1 / fines.



Upgrade to ATEX zone 22 II 3D available



\*More options available on request

Typical Materials

- Most food, beverage, chemical powders and granular products

Finishes available

- Internal surfaces dull polish to <0.8 Ra

Certified Technology



Product Specification

Check Sieving

Slimline Range

A highly effective check screener available in four different diameters.

The Sievmaster Slimline can be used as a simple means of check sieving into bins or containers. It is primarily designed to be fed under gravity within new or existing production lines, to screen product into a static weigh bins, big bags, convey lines, or hoppers.

The basic unit will locate within a confined area to provide for retrospective fitting into systems that previously had no sieving equipment. Used with the optional wheeled base assembly, it makes an ideal arrangement to sieve ingredients in small or large batch volumes.

Features & Benefits

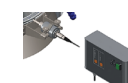
- Available in 550, 950, 1250, or 1550mm diameters
- Dust and waterproof to at least IP65
- Noise level less than 70 dBA in use
- Quick release direct earthing kit included as standard
- All stainless steel body and contact parts
- Low maintenance/running costs – tool free disassembly & minimal servicing
- Easy-Clean hygienic design, no crevices
- Conforms to CE, UKCA, FDA, EC 1935/2004, and ANIA regulations
- Rated ATEX zone 21 II 2 D
- No tool, quick change screens
- Wet or dry applications

Industries:



Product Options\*

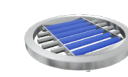
Ultrasonic upgrade - eliminates mesh blinding.



Cone Dispersion Inlet - protects the mesh screen.



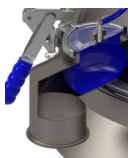
Underscreen magnet - with optional silicone covers.



Oversize Outlet control options for screening efficiency:

NEW

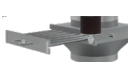
Latest technology BOSC - vacuum controlled inflatable balloon.



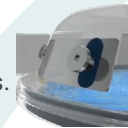
Open Section Frame - a hygienic design to minimise product build up.



Magnet Drawer - ease of access with pull-out drawer.



Stainless steel Weir Plate - with adjustable hand wheels.



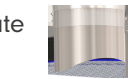
C-frame - can be manoeuvred in and out of awkward spaces (550 model only).



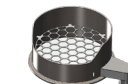
Upgrade to ATEX zone 20 II 1D (internal) and ATEX zone 22 II 3D (external).



Weir Flow Inlet - limits the rate of product on to the mesh.



Sack Tip Gallery - for bag loading into unit.



\*More options available on request

Typical Materials

- Most food, beverage, chemical powders and granular products
- Liquid separation

Finishes available

- Dressing of external welds - gallery & funnel
- External dull polish to <0.8 Ra
- ViwateQ ® / Sublimotion finish
- Pharma polish - to <0.25 Ra internally and externally

Certified Technology



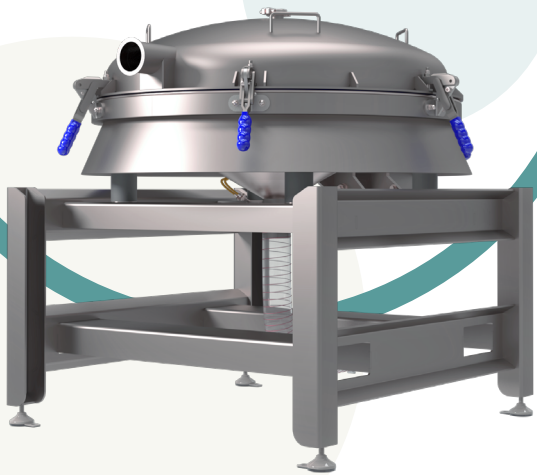
Product Specification

Check Sieving

Slimline Vacuum & Pressure Range

A range of sieves designed to be connected to a vacuum or positive pressure conveying system.

The Sievmaster Vacuum and Pressure Range, otherwise known as the **Vacusiev**, utilises specially modified components to safely screen product under vacuum or positive pressure. The flexible hose system and sieve are connected under vacuum to retain the product within, protecting both the operator and surrounding atmosphere. These sieves are suited for check screening toxic, very fine, or dusty material, the larger 950 and 1250 models can be used within a pressure transfer system as well as under vacuum.



sm sievmaster  
by farleygreene

Features & Benefits

- Available in 550, 950, or 1250mm diameters
- Easy-Clean hygienic design
- Conforms to CE, UKCA, FDA, EC 1935/2004 and ANIA regulations
- Rated ATEX zone 21 II 2 D
- Wet or dry applications
- Dust and waterproof to at least IP65
- Radial inlet as standard
- Quick release direct earthing kit included as standard
- All stainless steel body and contact parts
- Enclosed system, removing the issue of airborne dust or contamination
- Low maintenance/running costs – tool free disassembly & minimal servicing

Industries:



Product Options\*

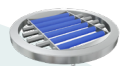
Ultrasonic upgrade - eliminates mesh blinding.



Oversize Outlet Connection to Butterfly Valve - pneumatically actuated.



Underscreen magnet - with optional silicone covers.



BFM Oversize Connection- in 304 or 316 Stainless Steel.



Open Section Frame - a hygienic design to minimise product build up.



C-frame - can be manoeuvred in and out of awkward spaces (550 model only).



Inlet Orientation - tangential type available.



Upgrade to ATEX zone 20 II 1D (internal) and ATEX zone 22 II 3D (external).



\*More options available on request

Typical Materials

- Very fine, dusty materials used in the food, beverage, chemical, and pharmaceutical industries.

Finishes available

- Dressing of external welds - gallery & funnel.
- External dull polish to <0.8 Ra
- ViwateQ ® / Sublimotion finish
- Pharma polish - to <0.25 Ra internally and externally.

Certified Technology



Product Specification

Check Sieving

Slimline Easilift Range

A sack tip sieve station capable of processing up to 25kg worth of product at one time.

Used together with either the 550 or 950 Slimline sieve, the Easilift range features an inclined sack rest table for ergonomic bag tipping and a Power-lift dust hood to minimise heavy lifting. Up to 25kg of product can be dispensed at a time for check screening into containers, static weigh bins, convey systems, or mixers.



sm sievmaster  
by farleygreene

Features & Benefits

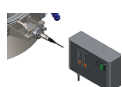
- Power-lift hood, no heavy lifting or awkward sleeve connections
- Self-sealing silicone diaphragm that provides a dust tight interface
- Hygienic open section support frame on standard models
- Conforms to CE, UKCA, FDA, EC 1935/2004 and ANIA regulations
- Rated to ATEX zone 21 II 2D
- Dust and waterproof to at least IP65
- Easy-Clean hygienic design, no crevices
- No tool, quick change screens
- Quick release direct earthing kit included as standard
- All stainless-steel body and contact parts
- Inclined sack rest table to ensure all powders are captured for screening
- Low maintenance/running costs – tool free disassembly & minimal servicing

Industries:



Product Options\*

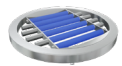
Ultrasonic upgrade - eliminates mesh blinding.



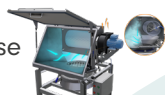
Ultra-Hygienic Version - The Easilift Ultra, with additional hygiene features.



Underscreen magnet - with optional silicone covers.



Local Dust Extraction (electric) LDEE - with reverse air jet filter cleaning.



Dust Hood Door - vertical Power-lift via 304SS gas struts.



Connection to vacuum transfer system - 50mm vacuum type outlet connection.



Side outlet - 100mm diameter downturn outlet (550 model only).



Sieve unit rated to ATEX zone 21 II 2D, dust hood and frame to ATEX zone 22 II 3D.



\*More options available on request

Typical Materials

- Sacks and containers of dry powdered / granular food, pharmaceutical, & chemical materials.

Finishes available

- Dressing of external welds - gallery & funnel.
- External dull polish to <0.8 Ra
- ViwateQ ® / Sublimotion finish
- Pharma polish - to <0.25 Ra internally and externally.

Certified Technology





Product Specification

Check Sieving

700-ST

The 700-ST combines the highest degree of control with the most hygienic design elements.

Fully stainless steel contact parts and external components mean it can be used in the most demanding environments, whilst tool-free, quick change mesh screens minimise downtime between batches.

It is available with a mobile base assembly as standard, supplied with adjustable bolt-down feet, and can be upgraded to fully stainless steel construction throughout.



sm siev master  
by farleygreene

Features & Benefits

- High throughput for a low footprint machine
- A fully enclosed system
- Wet or dry applications
- Easy-Clean, hygienic design
- Conforms to CE, UKCA, FDA, EC 1935/2004 and ANIA regulations
- Rated ATEX zone 22 II 3D
- No tool quick change screens
- All stainless steel body with 316 contact parts
- Dust and waterproof to at least IP65
- Low maintenance/running costs – tool free disassembly & minimal servicing
- A mobile unit that can be used under big bag or bulk container discharging systems, or in production lines at Critical Control Points

Industries:

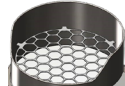


Product Options\*

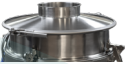
Mesh Deblinding - ultrasonic.



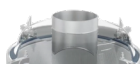
Sack/bag Entry with safety Hex Grid - side wall cut away for bag loading into open unit.



Enclosed Top Cover - removable top cover with 150mm diameter central inlet.



Weir flow Type Inlet - for increased product in feed flow control.



Underscreen Magnet Assy - 7000, 9000, or 11000 gauss.



Upgrade to ATEX zone 21 II 2D internal and ATEX zone 22 II 3D external.



\*More options available on request

Typical Materials

- Most food, pharmaceutical, chemical powders and granular products
- Liquid separation

Finishes available

- Dressing of external welds
- Internal & external dull polish to <0.8 Ra
- ViwateQ® / Sublimotion finish
- Pharma polish - to <0.25 Ra internally and externally.

Certified Technology



NEW PRODUCT

Product Specification

Centrifugal Sieving

Rota Range

Where high volume bulk check screening is required, the Rota Range provides non-vibratory centrifugal sifting.

Rota sifters use a set of revolving paddles to push product outwards against the mesh cylinder, forcing fine product through and continuously ejecting coarse product via a separate outlet.

Rotas are dust-tight and can be fixed into place within your process line. The internal mesh screen assembly and sieving paddle components are fully removable without the need for any tools. The mesh can also be fully inspected across its full circumference and length whilst still in place inside the machine.

Features & Benefits

- Available in 3 sizes (from smallest to largest): 90-C single basket, 180-C single basket, and 360-C twin basket variants
- Quick release side door toggle clamps for quick inspection
- Enhanced sealing profile on all doors
- Standard units can be used for gravity system, vacuum to -0.4bar and pressure to +0.8bar with a small safety upgrade\*\*
- Available with stainless or nylon woven mesh, wedgewire and perforated mesh screens
- All stainless steel metal contact parts
- High volume bulk sieving for wet or dry applications
- For use under big bag or bulk container discharging systems within production lines
- Can be used with any type of mechanical or pneumatic conveyor systems, with correct options
- Deagglomeration of compacted material in one action
- Cantilever shaft design to provide easy access to mesh screen & minimal servicing

\*\*if converting from gravity to +/- pressure please contact us for your free upgrade kit.

Industries:



Product Options\*

Wedgewire mesh basket - comes with blue metal detectable flange gasket .



Support frame – static or mobile (open section hygiene design).



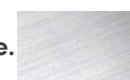
Perforated mesh basket.



Suitable for vacuum or pressure applications - see above



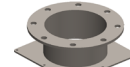
316 contact parts available.



Oversize collection barrel – 10 or 20 litre



Inlet transition piece - available on all models.



Oversize outlet butterfly valve – for “no spill” oversize barrel change over



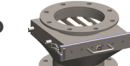
Fines transition piece – available on all models.



Deagglomeration of product (lump breaking) dedicated lump breaking machines are available for compacted or solid material breakdown.



Easy-Clean magnet assy to fines – magnet drawer.



\*More options available on request

Typical Materials

- Almost any powder or granulated material used in the food, beverage, and chemical industries.

Finishes available

- Dressing of External Welds
- Internal Dull Polish to <0.8 Ra
- ViwateQ® / Sublimotion Finish
- Pharma Polish - to <0.25 Ra internally and externally.

Certified Technology



Product Specification

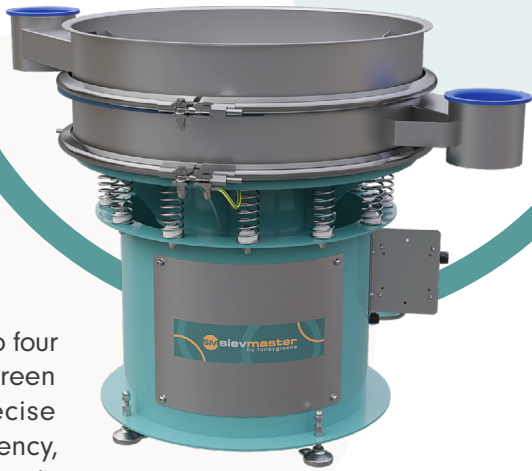
Grading

Multiscreen Range

A vibratory sieve used for grading and separating product.

Achieve precise separation whilst sorting material in up to four grades with the Multiscreen grading sieve. The Multiscreen uses weight configuration technology allowing precise control of mesh dwell time and overall screening efficiency, maximising the consistency of the product being screened.

Mechanical or ultrasonic mesh deblinding systems can be installed, allowing consistent throughput of difficult product.

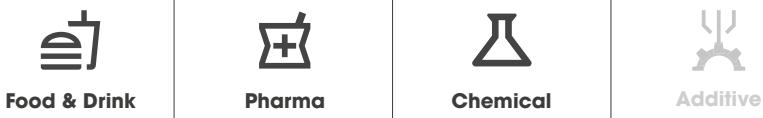


sm sievmaster  
by farleygreene

Features & Benefits

- Available in 800, 1200, or 1500mm diameters
- No tool, quick change bonded mesh screens
- Continuous processing of material into required fractions
- Conforms to CE, UKCA, FDA, EC 1935/2004 and ANIA regulations
- Wet or dry applications
- Dust and waterproof to at least IP65
- Easy-Clean hygienic design
- Low maintenance / running costs – tool free disassembly & minimal servicing
- Adjustable weights to control material on screen for optimum dwell patterns
- All stainless steel and contact parts (non-contact parts can be upgraded to stainless steel)

Industries:



Product Options\*

Ultrasonic upgrade - eliminates mesh blinding.		Twin oversize outlets to top gallery - for high % rapid oversize removal.	
Enclosed top cover - removable cover with central inlet.		Mobile base assembly - with swivel locking castors.	
Side vision port - added to side wall of gallery.		Hygiene base assembly - satin finish stainless steel on adjustable feet.	
Full scroll plate - added to top gallery.		Upgrade to ATEX zone 22 II 2D (internal & external) or ATEX zone 21 II 2D internal & ATEX zone 22 II 3D external.	
High flow discharge to fines - increase height and angle of internal funnel plate.		Hygiene vibro body & suspension - stainless steel motor mounting assy & springs.	
Continuous processing of 2, 3, or 4 fractions.		Mechanical Mesh Deblinding	

\*More options available on request

Typical Materials

- Most food, pharmaceutical, chemical powders and granular products

Finishes available

- Dressing of internal / external Welds.
- Internal dull polish to galleries <0.8 Ra
- ViwateQ ® / Sublimotion finish
- Pharma polish - to <0.25 Ra internally and externally.

Certified Technology  
FDA CE UKCA Ex

Product Specification

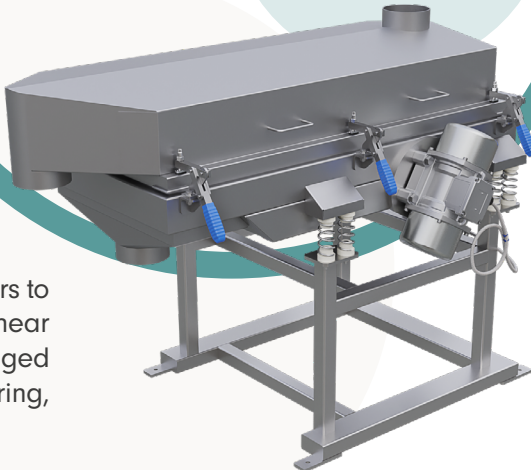
Linear Sieving

Segregator Range

A linear vibratory screener suitable for separating both wet and dry product.

The Sievmaster Segregator uses a pair of vibratory motors to move product along a rectangular mesh screen in a linear direction. The large screen area allows product prolonged sieving time, especially useful for de-dusting, de-watering, and screening delicate product.

The Segregator range is available in three different sizes with variations to provide up to three separations and a wide choice of sieving aids for problem materials.



sm sievmaster  
by farleygreene

Features & Benefits

- Screen surface area available in 3 x different sizes: 1280mm x 640mm, 1575mm x 645mm, or 1540 x 920mm
- A very high sieving efficiency
- Adjustable screen inclination to raise the oversize outlet
- Easy-Clean, hygienic design
- Wet or dry applications
- Dust and waterproof to at least IP65
- Quick change, bonded screens
- Conforms to CE, UKCA, FDA, EC 1935/2004 and ANIA regulations
- Low maintenance/running costs – tool free disassembly & minimal servicing
- Linear motion is ideal for screening, grading, de-dusting, de-watering, and liquid separation

Industries:



Product Options\*

Continuous Processing of 2 Fractions - Oversize / Fines.		2 x Vision Ports	
Continuous Processing of 3 Fractions - Oversize / Cut 1 / Fines.		Mesh Deblinding - ultrasonic.	
Top Enclosed Lid - with 150-300mm diameter plain inlet.		Upgrade to ATEX zone 21 II 2D internal / ATEX zone 22 II 3D external	

\*More options available on request

Typical Materials

- Most food, pharmaceutical, chemical powders and granular products
- Liquid separation

Finishes available

- Dressing of external welds
- Internal & external dull polish to <0.8 Ra
- ViwateQ ® / Sublimotion finish
- Pharma polish - to <0.25 Ra internally and externally.

Certified Technology  
FDA CE UKCA Ex



Product Specification

Ultrasonic Sieving

Ultrasonic System

A set of supplementary equipment used to prevent mesh blockage and blinding.

The ultrasonic system is designed to fit within most Sievmaster sieving machines. It uses a generator box connected to an externally mounted converter which applies ultrasonic vibrations to a wave guide and transmits them to a mesh screen.

It applies a continuously varying wave, known as ‘frequency variation’, rather than ‘single wave’ resonance frequency. This solves common problems such as heating and ‘hot spots’ that run the risk of causing premature mesh failure.

The Sievmaster Ultrasonic System is available with a variety of different options depending on each user’s requirements. Please get in contact with your local Farleygreene distributor or with us directly to find out more about specifications for the ultrasonic system.

Features & Benefits

- Improves and ensures consistent throughput rates and helps to reduce maintenance by keeping the mesh clear.
- A hygienic design, all ultrasonic components (other than the mesh ring) are outside the product flow.
- The system uses frequency sweeping to minimise work hardening of mesh wires and better dissipate the build up of heat in the mesh, maximising the life span of the mesh.
- Self tuning ultrasonics that find the resonance frequency of the system they are attached to, meaning no operator input is needed when switching between mesh rings gaskets etc.
- Can be connected to and controlled/monitored by a external control system via the integrated RS232 port and generator.

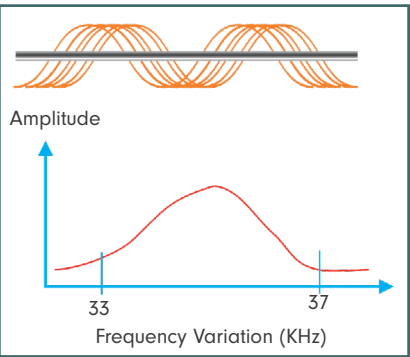
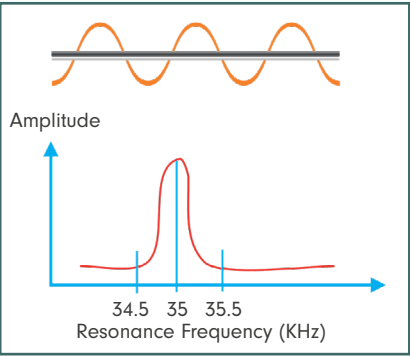
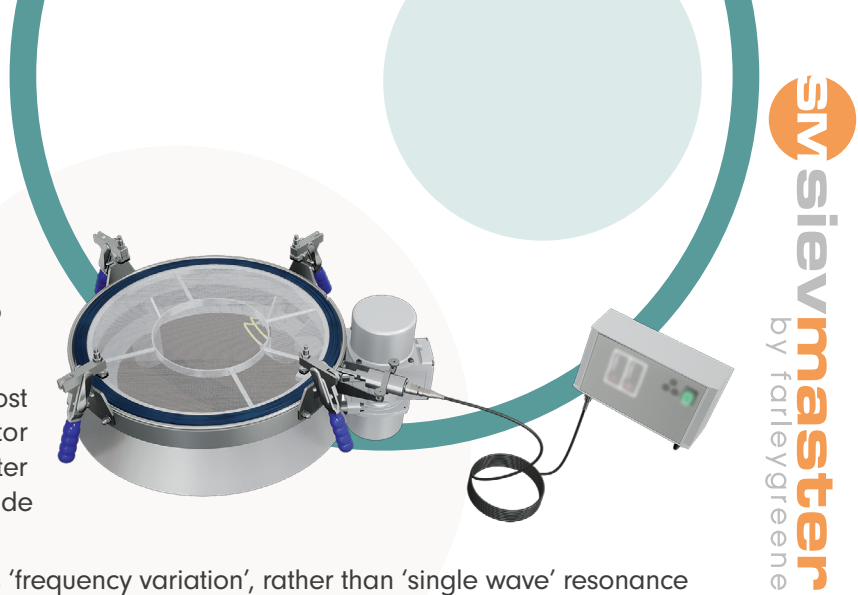
Why ultrasonic screening?

- Delivers efficient sifting of powders with particle sizes of <300 micron
- Improves throughput up to 300% in some cases
- Helps to break down agglomerated materials
- Ensures a long term cleaning/deblinding effect
- Special attachment for use with laboratory test sieves
- Software package to allow remote control & analysing

How do ultrasonic screens work?

The generator creates a high frequency signal that the converter changes into an ultrasonic sound wave.

These oscillations are transferred to the mesh screen where they are evenly distributed. The oscillations of the mesh cloth reduce the frictional resistance between the powders and the screen. This reduces the tendency towards blocking and blinding, whilst fluidising the product as it flows across the mesh, resulting in increased throughputs.



Spares & Accessories

We are here to support you during the life of your sieving machine offering you a wide range of spare parts, not only for our own manufactured machinery but for other sieve manufacturers too.

We provide you with a fully itemised spares list bespoke to your machine, once it has been installed, allowing you easy identification of parts when required.

Our Re-mesh Service

We re-mesh existing frames or provide new mesh screens in either stainless steel **304/316/318LN** or **430SS** for magnetic detection.

We provide meshed rings in a wide range of standards such as **EC 1935/2004** and **FDA** even if the original supplier was not Farleygreene.

Simply package up your mesh ring, print off and complete the ‘**Re-mesh Request Form**’, attach it to your parcel and pop it in the post.

See our mesh guide on page 20 for the types of mesh we offer.



Spares we offer

- |                          |                       |                              |                           |
|--------------------------|-----------------------|------------------------------|---------------------------|
| ✓ Funnels                | ✓ Direct Earthing Kit | ✓ Suspension Mount & Springs | ✓ Toggle Clamps           |
| ✓ Galleries              | ✓ Band Clamps         | ✓ Gaskets                    | ✓ Diaphragm Seal          |
| ✓ Magnets                | ✓ Motors              | ✓ Earthing Set               | ✓ Slimline Mesh Rings     |
| ✓ Multiscreen Mesh Rings | ✓ Vision Port Covers  | ✓ Spindle & Lock Nut         | ✓ Sievgen 04 Mesh Gallery |

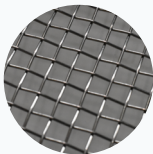
# Choice of mesh

## A general guide to our selection.

Mesh selection is one of the most important choices when deciding on the sieving machine requirement. Throughput expectations, machine size, and style of sieving are controlled by mesh size selection. Influencing factors are given below to aid customers in the choice of mesh for their application.

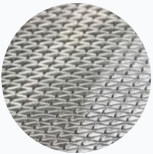
**Stainless Steel Mesh**

The most common material choice. It provides strength and is resistant to heat. It is ideal where a hot material is to be sieved or where a large amount of product will remain on the screen. It can be supplied in a variety of weave patterns, the most common being a plain grid type weave. Stainless steel mesh retains its size integrity even on larger meshes.




**Magnetic Mesh**

Woven mesh can also be supplied in a special 430CS magnetic stainless version, this mesh has a higher chrome content than standard stainless steel mesh. Whilst still corrosion resistant, it can be picked up easily by rare earth magnet assemblies should any breakages occur in use. Another variant is 318LN mesh which is an austenitic-ferritic steel and is highly corrosion resistant but retains its magnetic properties. This type of mesh is available in a very limited range of apertures.



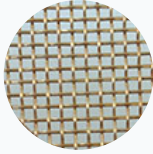
**Nylon & Polyester Mesh**

Nylon meshes have a smoother filament than stainless steel and are ideal for sieving fine powders. Nylon has inherent abrasion resistance. They are limited to temperatures up to 60°C and will absorb moisture to create a slack and less efficient screen. It can also be coloured RED or BLUE. Polyester is similar to nylon, but superior in that it has a temperature endurance up to 130° C. It is, however, less resistant to abrasion than nylon.




**Phosphor Bronze**

Often used where explosive materials are sieved, however stainless steel meshes have surpassed phosphor bronze due to availability.




**Perforated Mesh**

This mesh is made from sheets punched to either square or round apertures. Supplied in sheet form and cut to size, they can be bonded to rings the same as woven mesh. These mesh types are extremely hard wearing and stable in use. They do have a reduced open area so advice should be sought to ensure capacity rates can still be met. Available in most types of stainless steel, aluminium and carbon steel.



**Wedge Wire Screens**

Wedge wire screens can be fabricated in a range of both flat panels and tubes. Wedge wire and support profiles are resistance welded with accurate slot dimensions. The screens can be mechanically and electro-polished and given additional surface hardening treatments. Further support structures and fastening brackets, can be added. Tubes can have various end piece connections and additional internal strengthening.



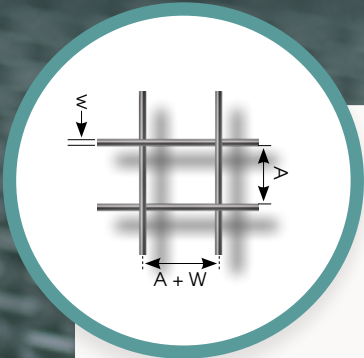
# Mesh Apertures

Most meshes are now a bonded configuration and require a special jig to ensure optimum tension and aperture size integrity – the mesh is stretched along its warp and weft to a precise tension. Hand meshed systems cannot guarantee the size or shape of the aperture due to the stretching of the mesh from differing directions (diamond shaped holes, and irregular hole patterns).

All mesh used by Farleygreene conforms to ISO standards 4782, 4783 and 9044 to ensure quality and accuracy of our meshing service.

Mesh is usually supplied in 1220mm wide rolls and in linear length increments as required. 1020, 1530 & 2000mm wide rolls are available but only in certain apertures.

Farleygreene offer a full re-mesh/meshing service. Please ask for our mesh information charts for more details of mesh apertures available.



OPEN AREA (Fo) = .....%  
 $Fo = \frac{A^2 \times 100}{(A + W)^2}$

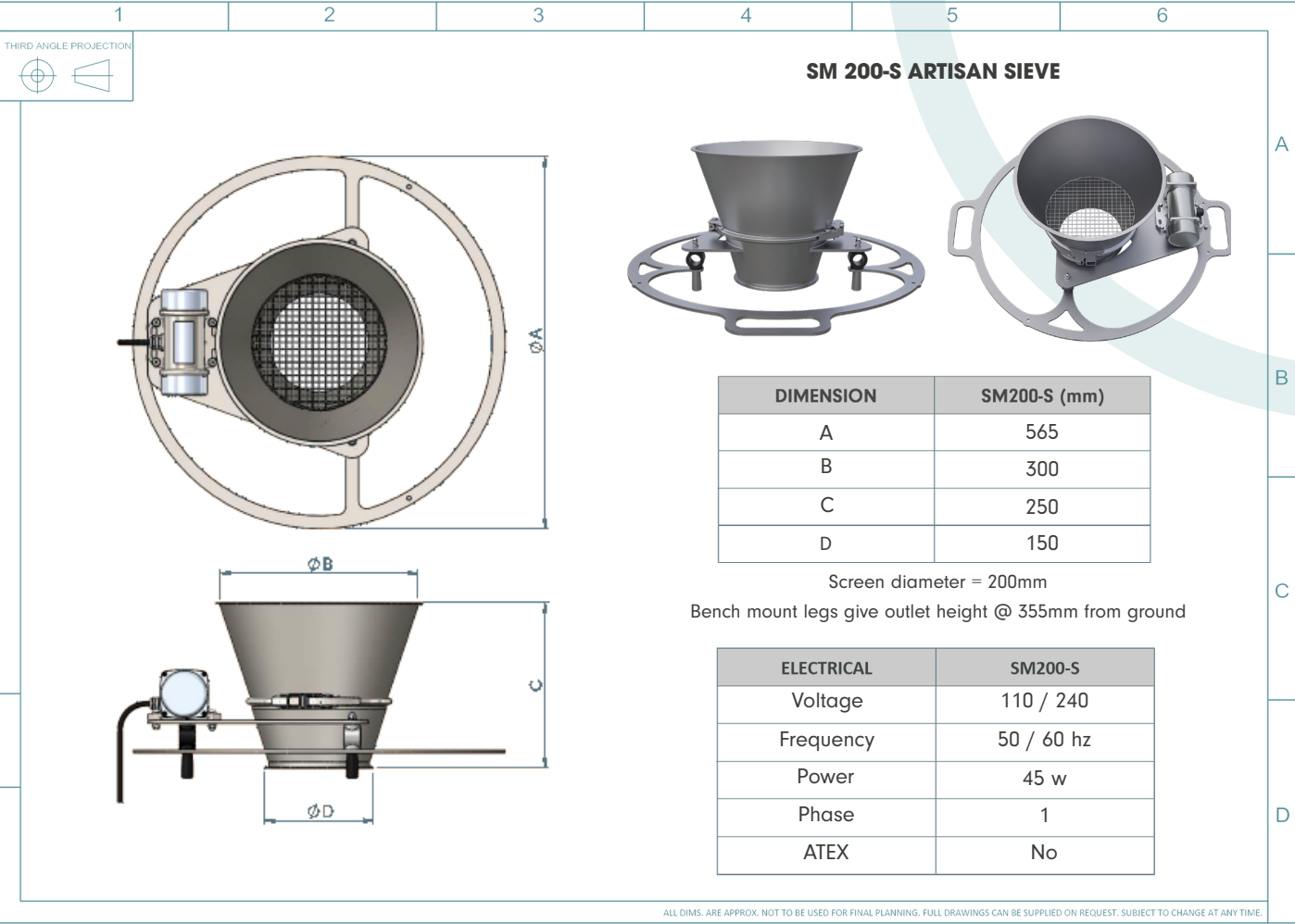
A = APERTURE SIZE  
W = WIRE DIAMETER  
A + W = PITCH

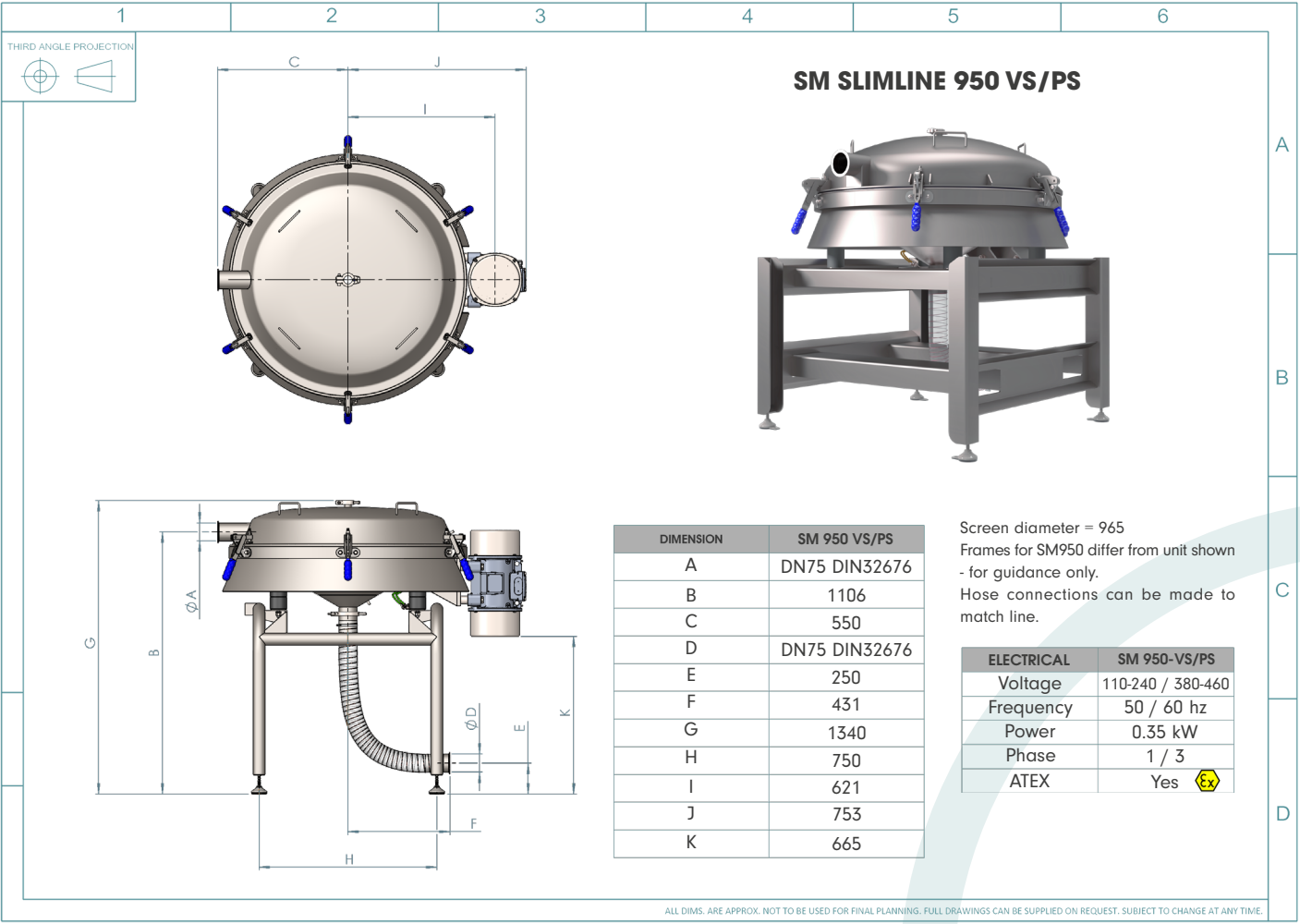
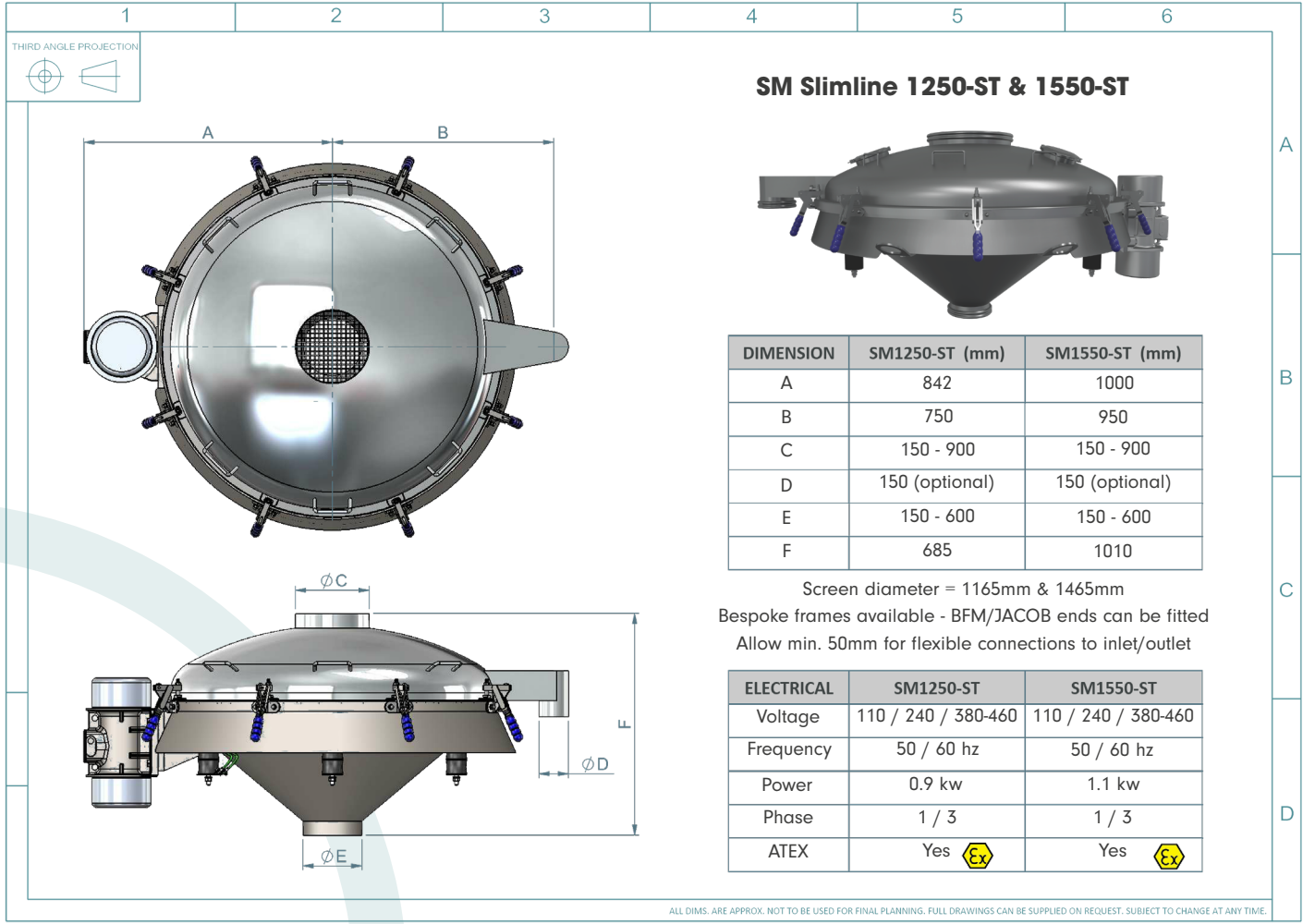
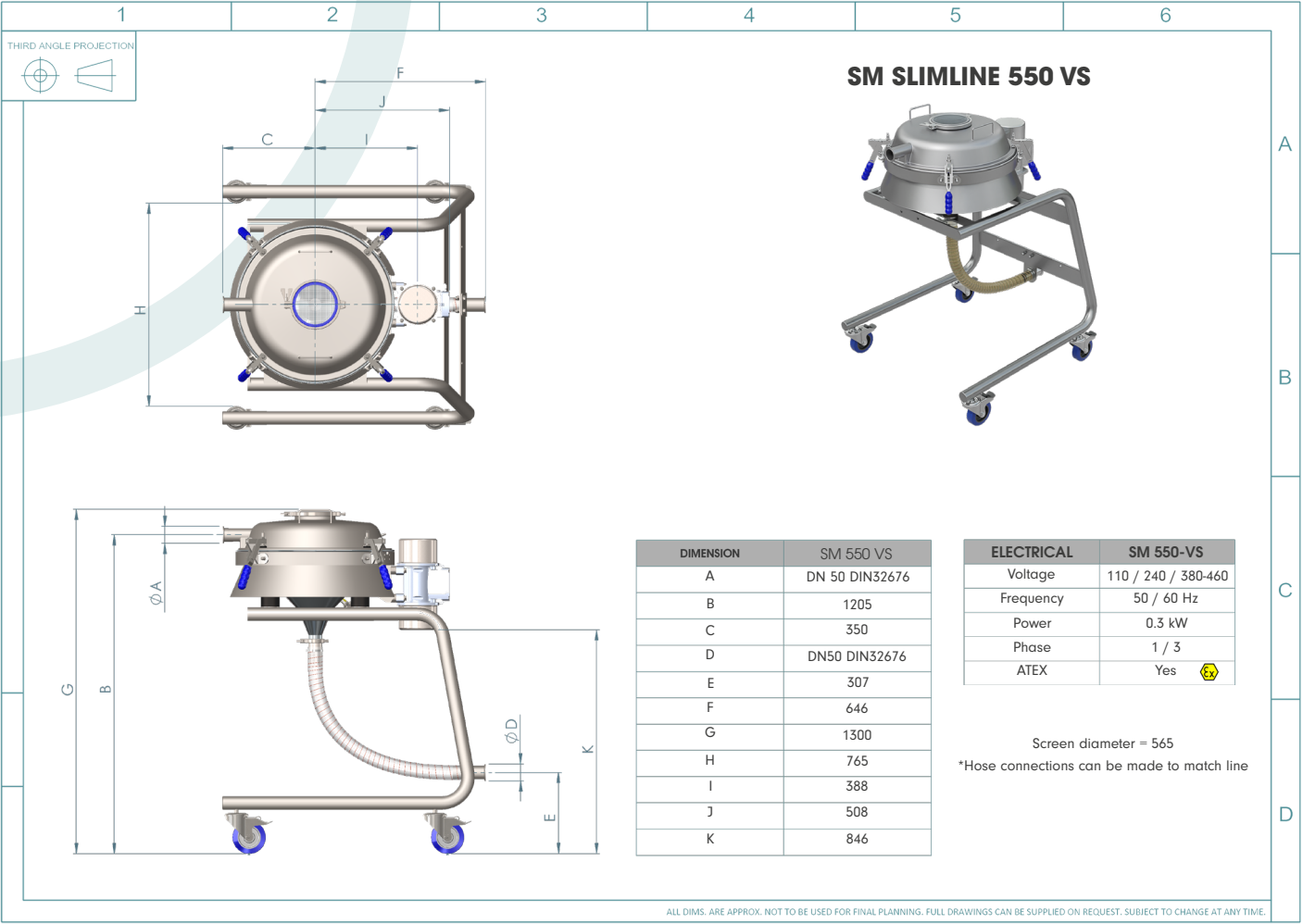
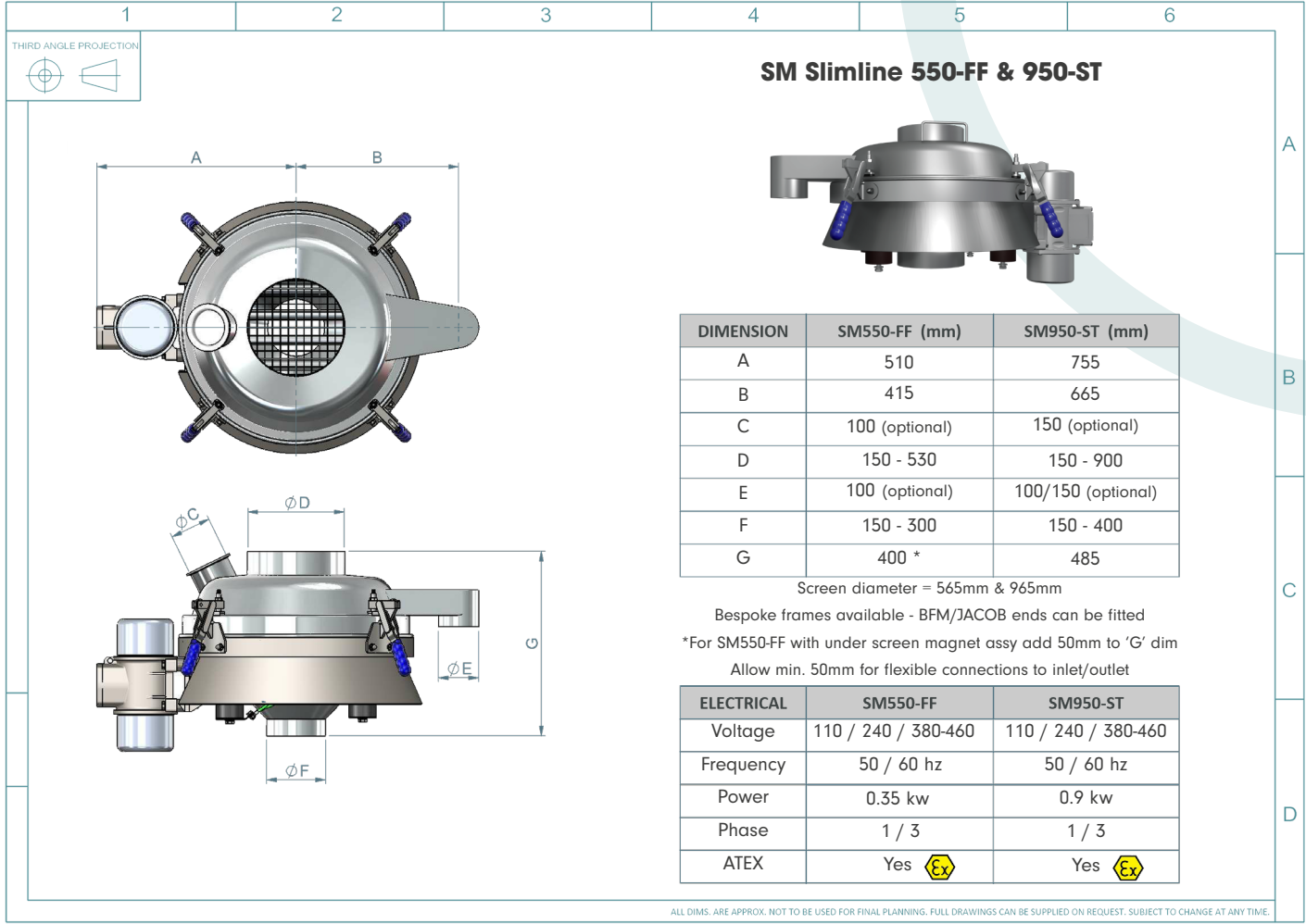
APERTURE SIZE X 1000 = MICRONS  
MESH COUNT = HOLES PER LINEAR INCH

TABLE SHOWS TYPICAL SIZES ONLY  
MANY MORE APERTURES ON REQUEST

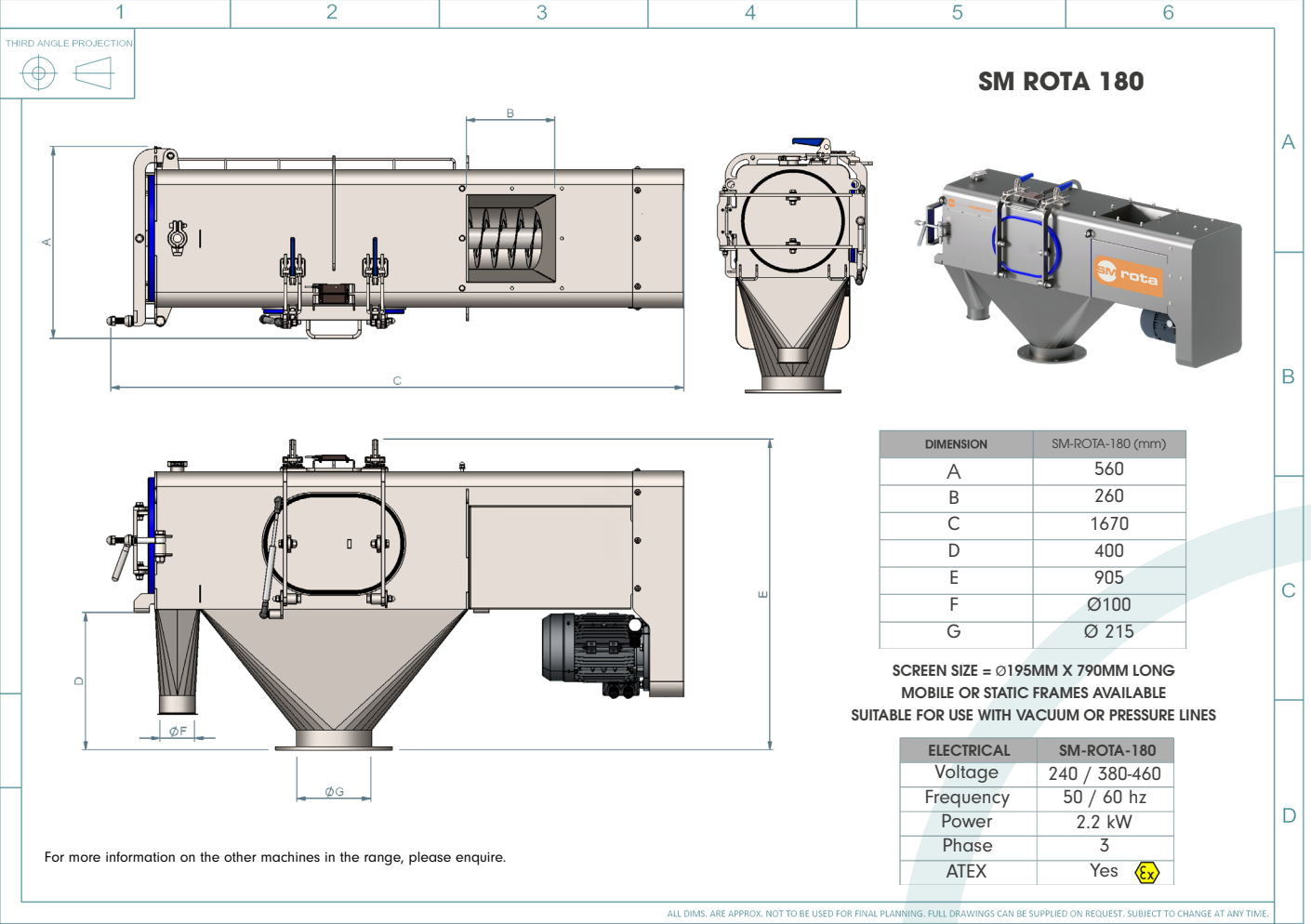
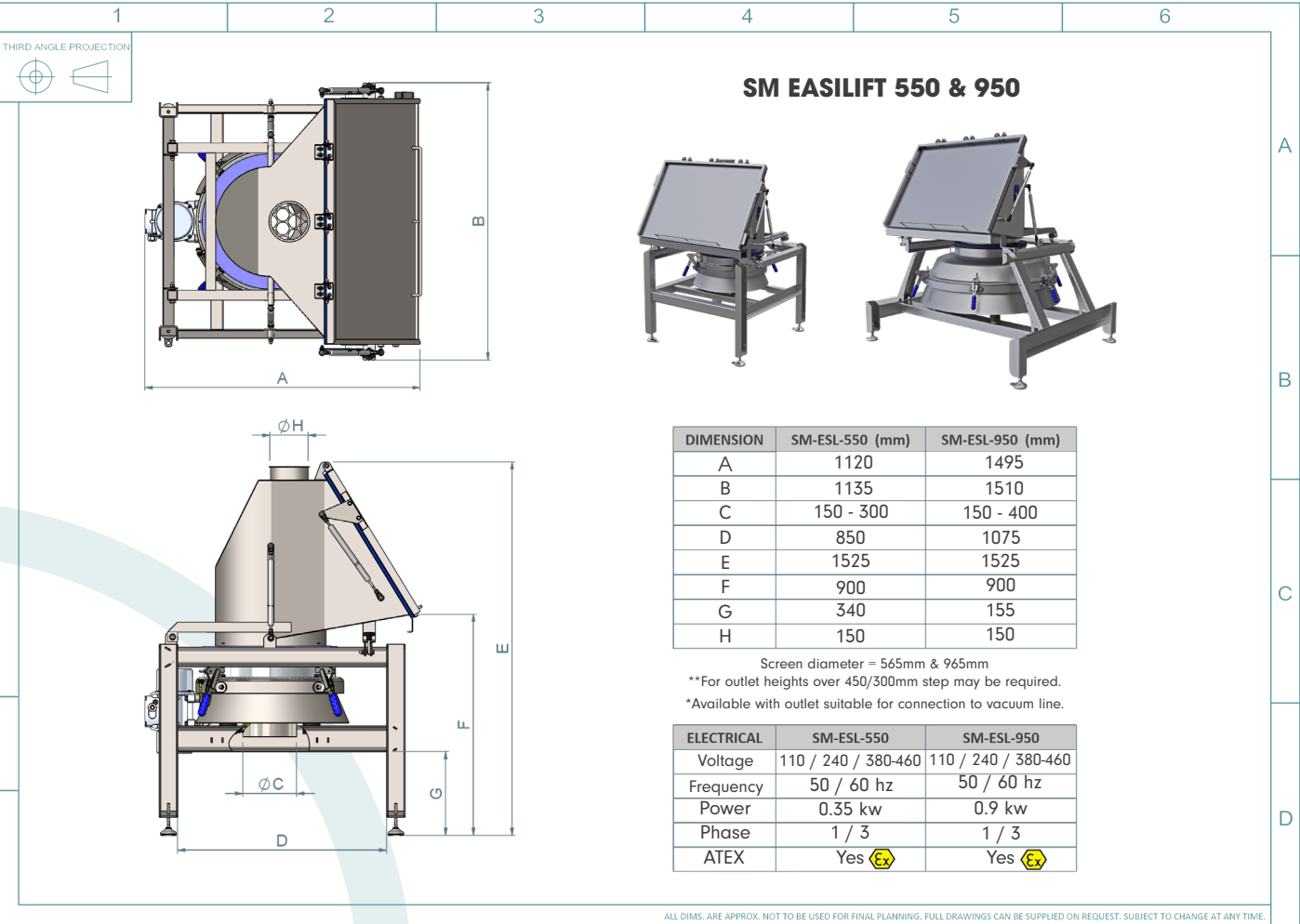
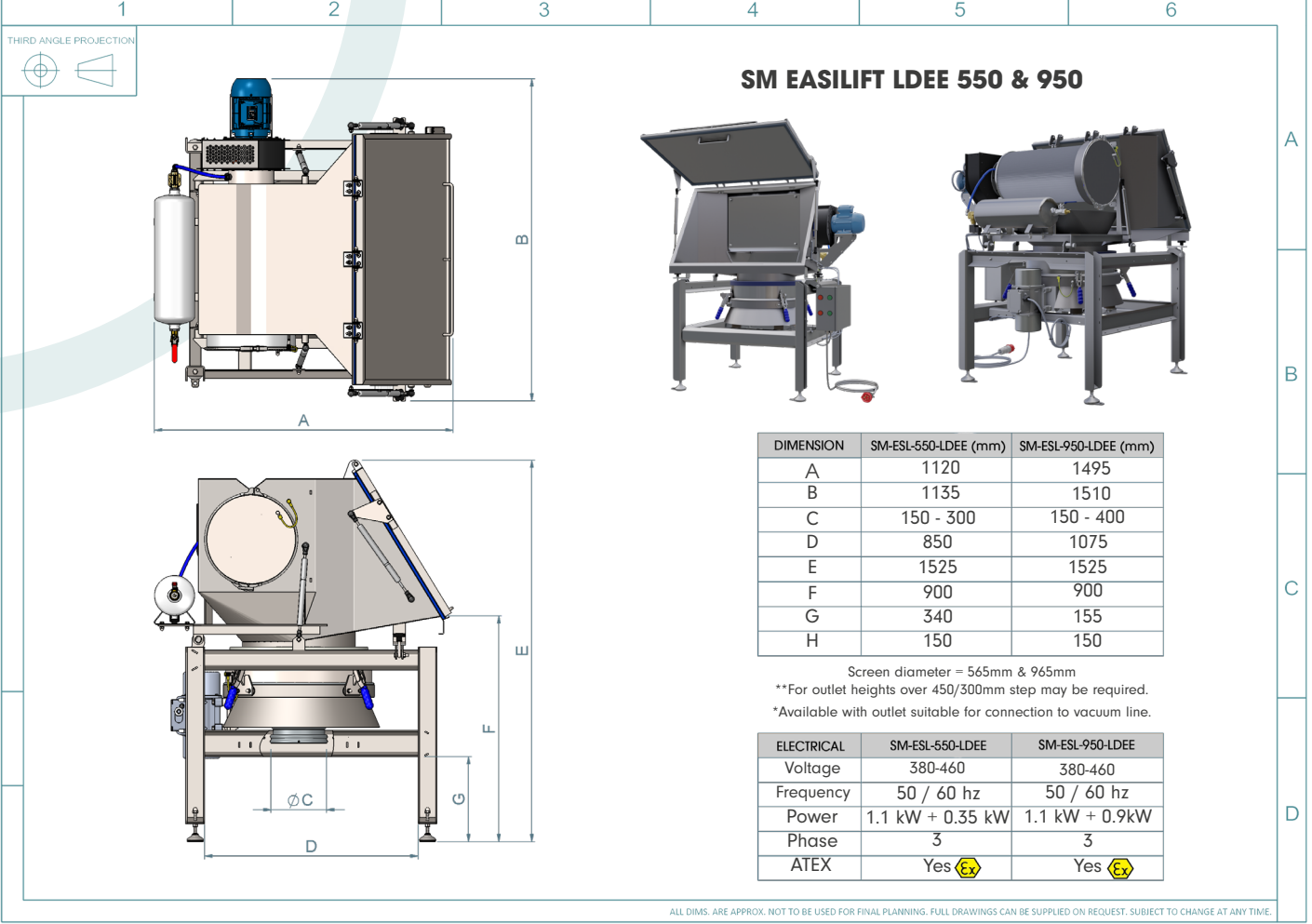
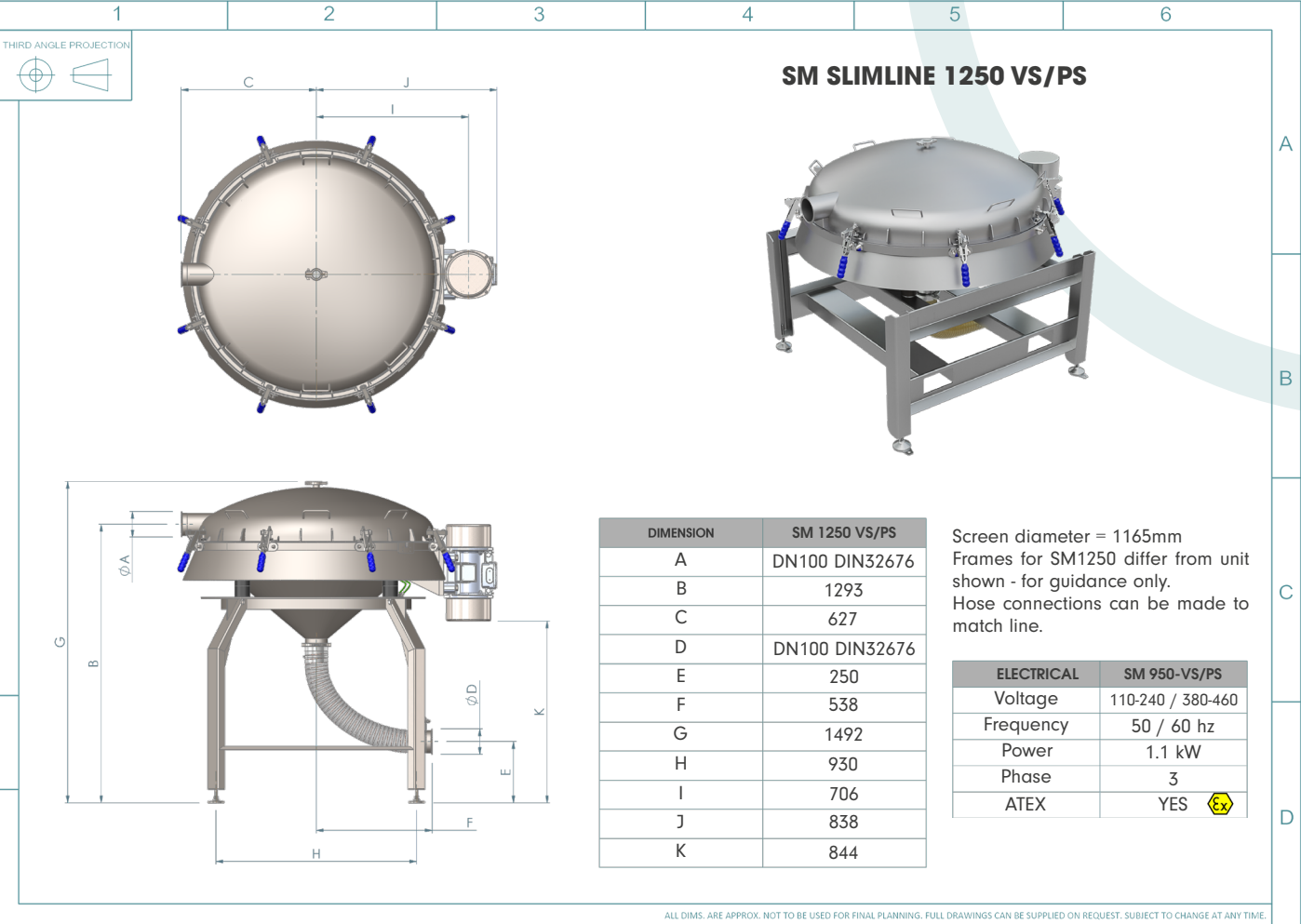
Aperture	Mesh	Wire dia	Open area %
0.063	250	0.040	38
0.075	230	0.036	45.7
0.100	165	0.050	44.4
0.150	100	0.100	36
0.200	88	0.090	48
0.250	62	0.160	38
0.400	40	0.220	41
0.500	38	0.160	57.6
0.630	32	0.160	64
0.710	29	0.180	64
0.850	24	0.200	65.5
0.900	23	0.200	67
1.000	19	0.320	57.6
1.250	15.4	0.400	57.6
1.500	12	0.630	49.6
2.000	10	0.560	60
2.500	8.5	0.500	69.4
3.15	6.4	0.800	64
4.000	5.4	0.710	72
5.000	3.8	1.6	57.6
6.300	3.4	1.250	69.4
7.100	3	1.400	69.4
8.000	2.6	1.600	69.4
10.000	2.2	1.400	77
11.200	2	1.600	77
12.500	1.8	1.6	79
16.000	2	2.000	79

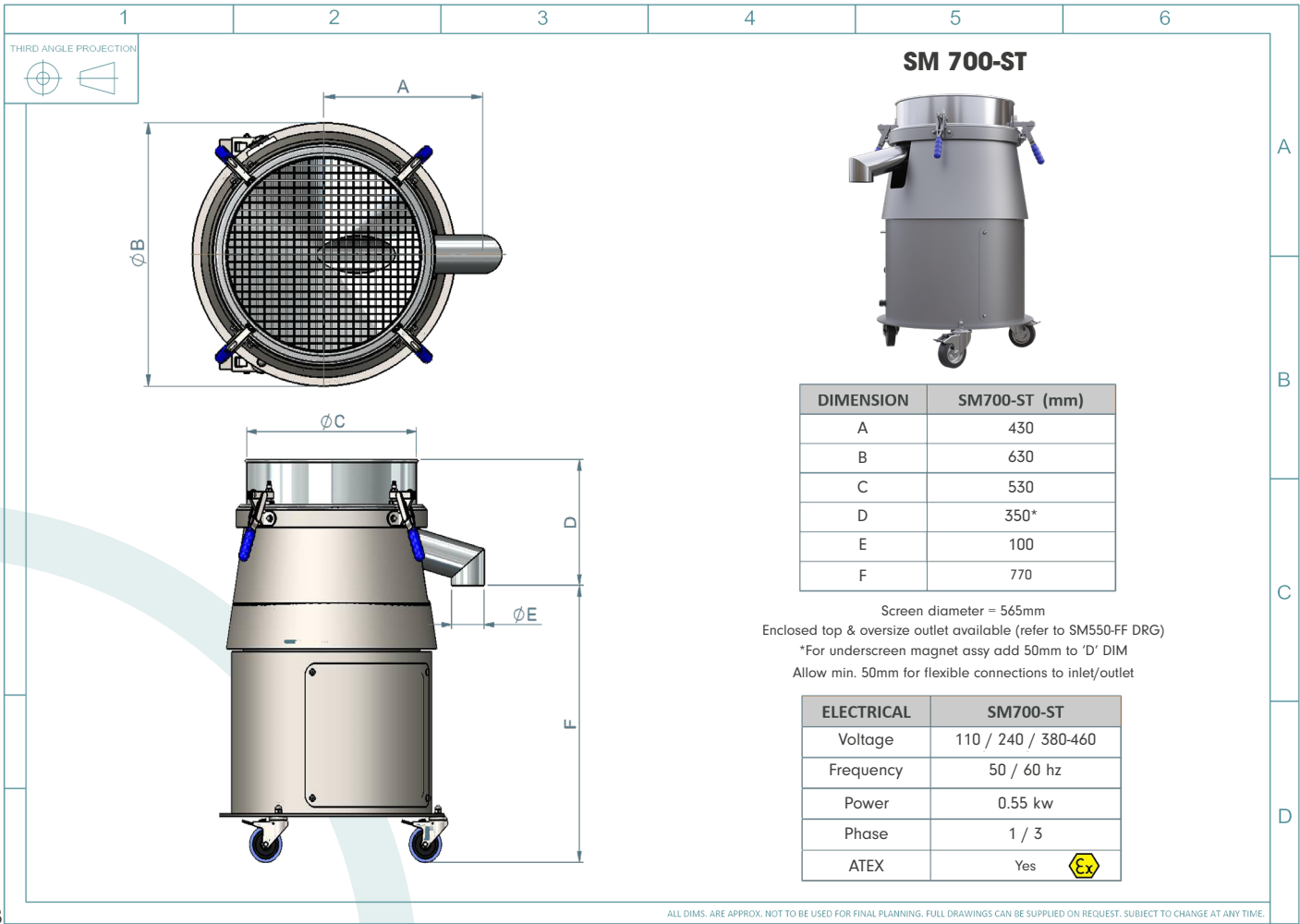
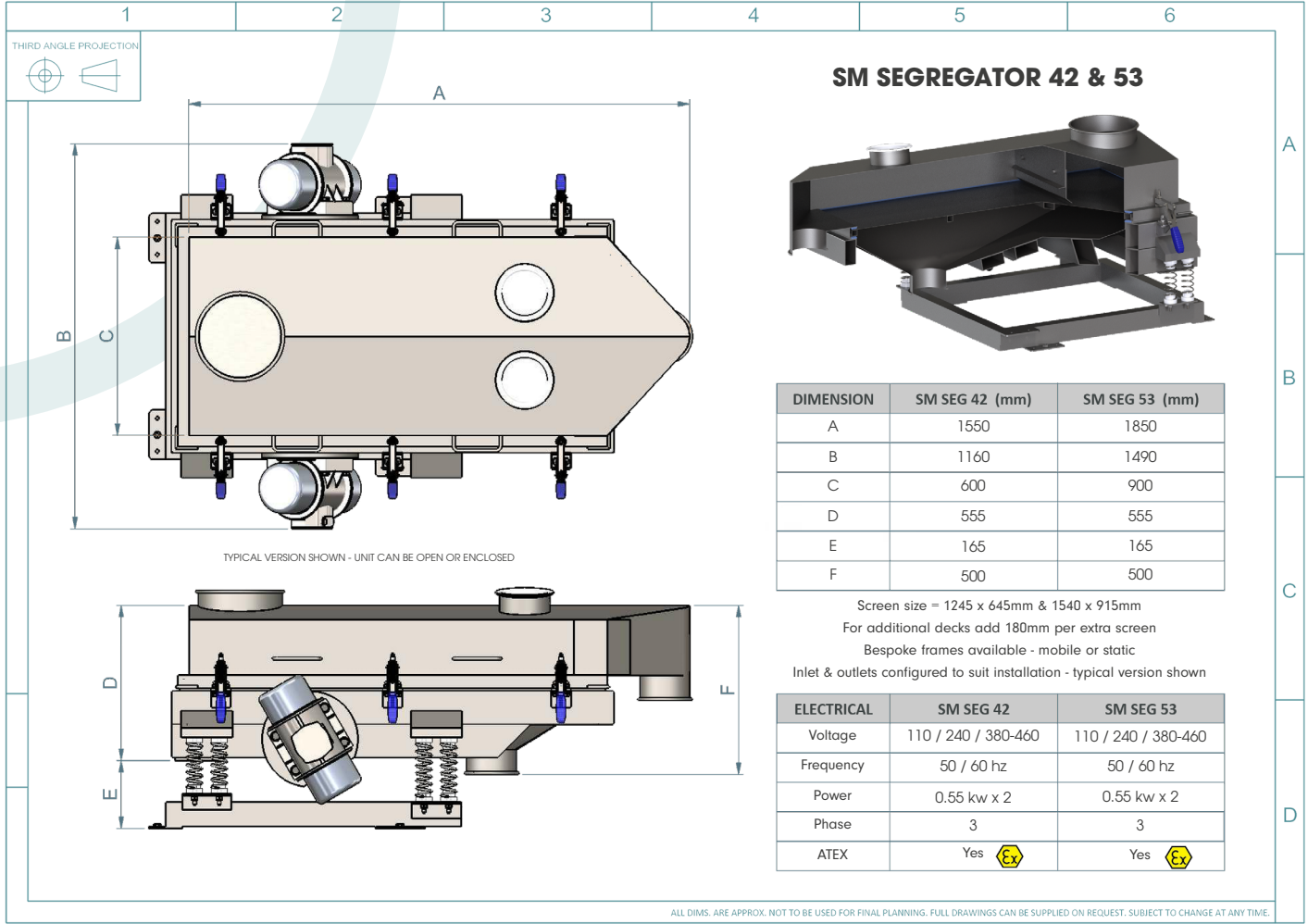
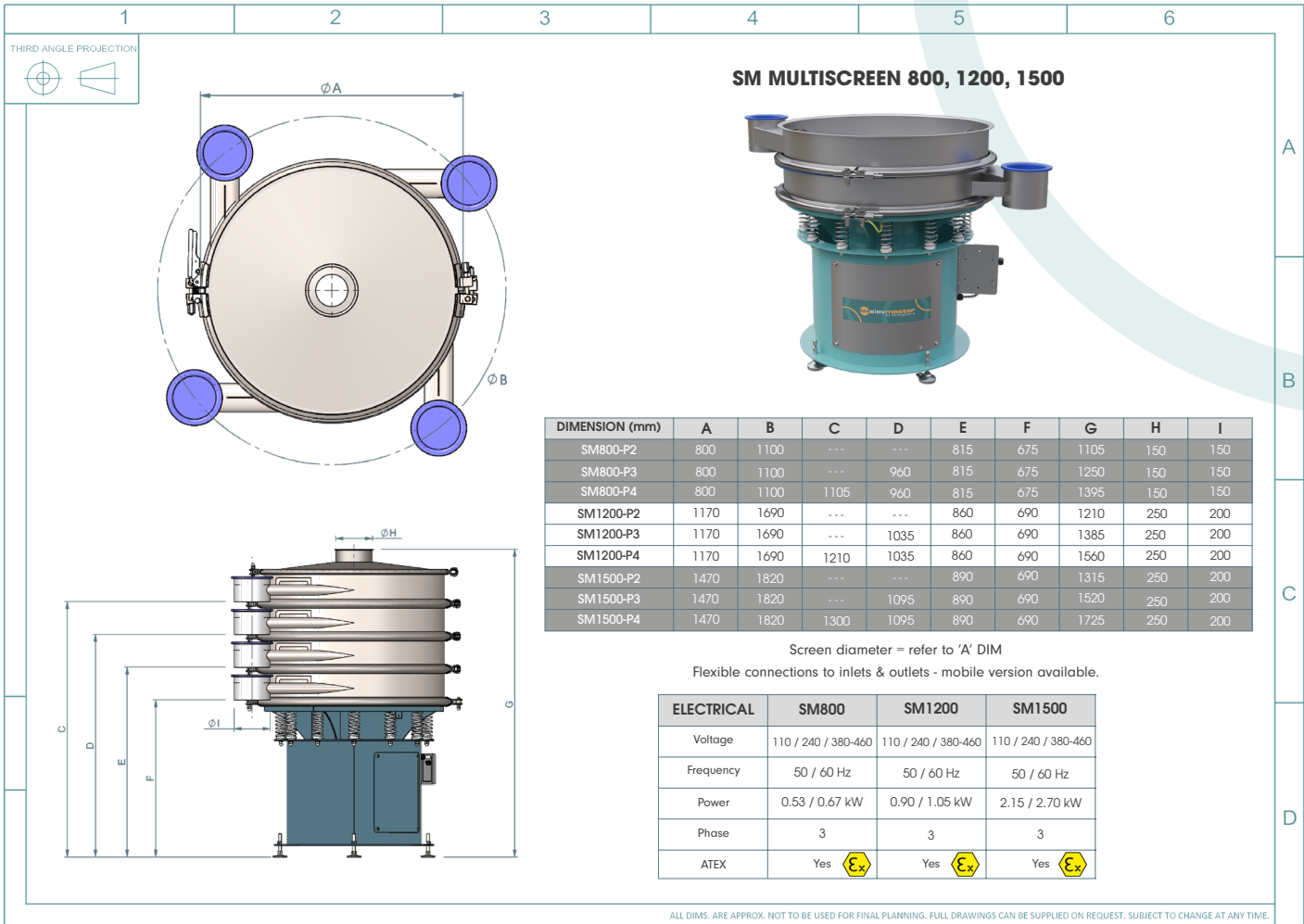














Farleygreene Limited, Unit 2, Hatch Industrial Park, Greywell Road,  
Mapledurwell, Hampshire RG24 7NG, United Kingdom

t +44 (0) 1256 474 547  
f +44 (0) 1256 329 596  
e [info@farleygreene.com](mailto:info@farleygreene.com)

[farleygreene.com](http://farleygreene.com)  
Company No: 1243329

Copyright © 2023 Issue C 01.23



Distributed by:

