

Product Specification

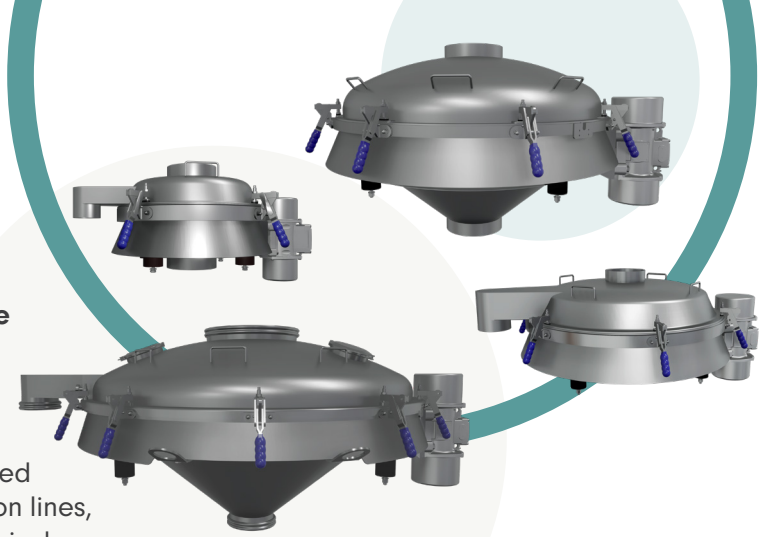
Check Sieving

Slimline Range

A highly effective check screener available in four different diameters.

The Sievmaster Slimline can be used as a simple means of check sieving into bins or containers. It is primarily designed to be fed under gravity within new or existing production lines, to screen product into a static weigh bin, big bag, convey line, or hopper.

The basic unit will locate within a confined area to provide for retrospective fitting into systems that previously had no sieving equipment. Used with the optional wheeled base assembly, it makes an ideal arrangement to sieve ingredients in small or large batch volumes.



sm sievmaster
by farleygreene

Features & Benefits

- Available in 550, 950, 1250, or 1550mm diameters
- Dust and waterproof to at least IP65
- Noise level less than 70 dBA in use
- Quick release direct earthing kit included as standard
- All stainless steel body and contact parts
- Low maintenance/running costs - tool free disassembly & minimal servicing
- Easy-Clean hygienic design, no crevices
- Conforms to CE, UKCA, FDA, EC 1935/2004, and ANIA regulations
- Rated ATEX zone 21 II 2 D
- No tool, quick change screens
- Wet or dry applications

Industries:



Food & Drink



Pharma



Chemical



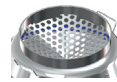
Additive

Product Options*

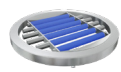
Ultrasonic upgrade - eliminates mesh blinding.



Cone Dispersion Inlet - protects the mesh screen.



Underscreen magnet - with optional silicone covers.

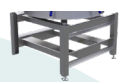


Oversize Outlet control options for screening efficiency:

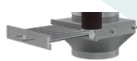
Latest technology BOSC - vacuum controlled inflatable balloon.



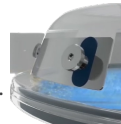
Open Section Frame - a hygienic design to minimise product build up.



Magnet Drawer - ease of access with pull-out drawer.



Stainless steel Weir Plate - with adjustable hand wheels.



C-frame - can be manoeuvred in and out of awkward spaces (550 model only).



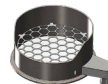
Upgrade to ATEX zone 20 II 1D (internal) and ATEX zone 22 II 3D (external).



Weir Flow Inlet - limits the rate of product on to the mesh.



Sack Tip Gallery - for bag loading into unit.



*More options available on request

Typical Materials

- Most food, pharmaceutical, & chemical powders and granular products
- Liquid separation

Finishes available

- Dressing of External Welds - gallery & funnel.
- External Dull Polish to <math><0.8 \text{ Ra}</math>
- VivateQ® / Sublimotion Finish
- Pharma Polish - to <math><0.25 \text{ Ra}</math> internally and externally.

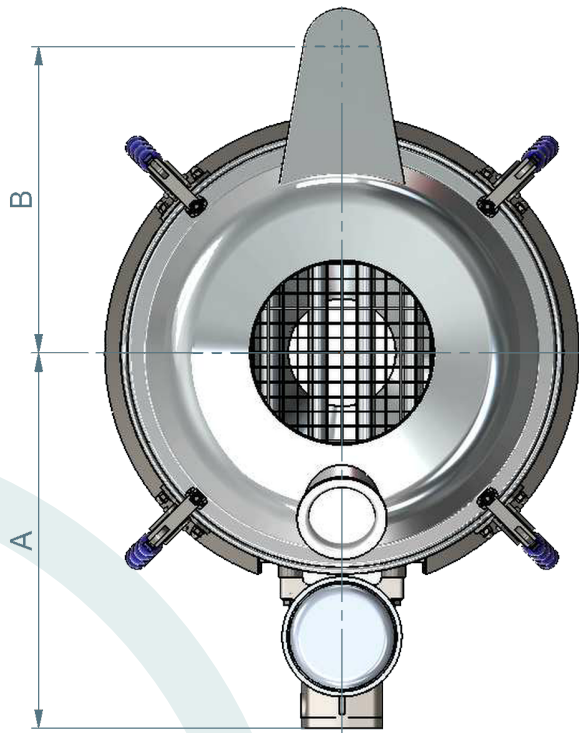
Certified Technology



THIRD ANGLE PROJECTION



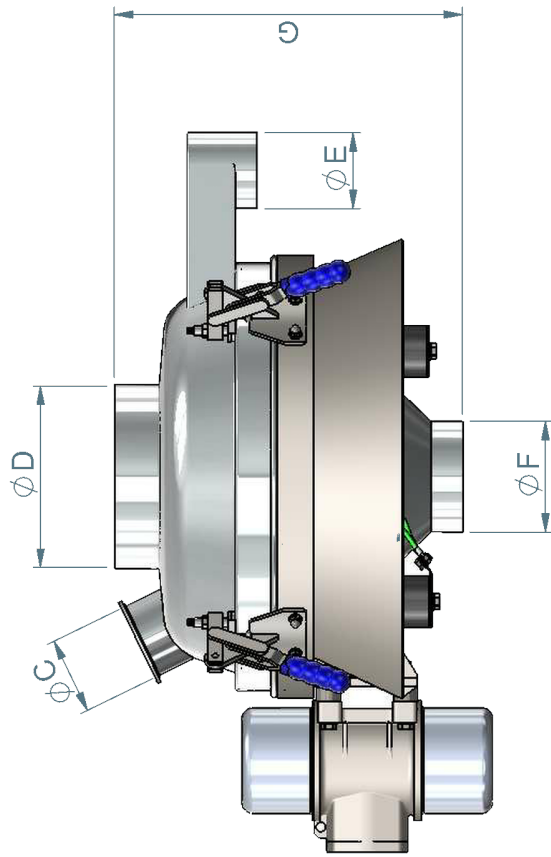
SM Slimline 550-FF & 950-ST



DIMENSION	SM550-FF (mm)	SM950-ST (mm)
A	510	755
B	415	665
C	100 (optional)	150 (optional)
D	150 - 530	150 - 900
E	100 (optional)	100/150 (optional)
F	150 - 300	150 - 400
G	400 *	485

Screen diameter = 565mm & 965mm

Bespoke frames available - BFM/JACOB ends can be fitted
 *for SM550-FF with underscreen magnet assy add 50mm to 'G' dim
 allow min. 50mm for flexible connections to inlet/outlet



ELECTRICAL	SM550-FF	SM950-ST
Voltage	110 / 240 / 380-460	110 / 240 / 380-460
Frequency	50 / 60 hz	50 / 60 hz
Power	0.35 kw	0.9 kw
Phase	1 / 3	1 / 3
ATEX	Yes	Yes

FOR IMAGERY OPEN TOP GALLERY REFER TO 3RD LIST DRAWING

1

2

3

4

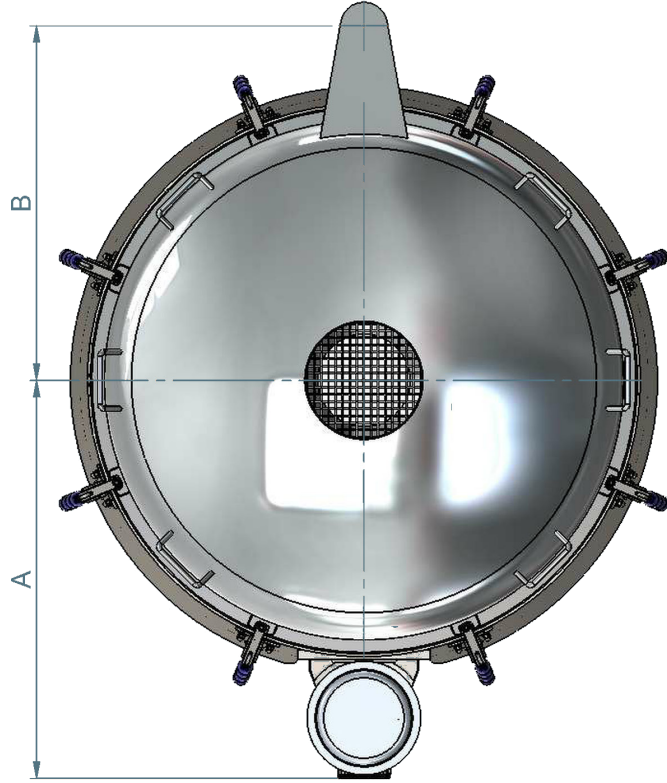
5

6

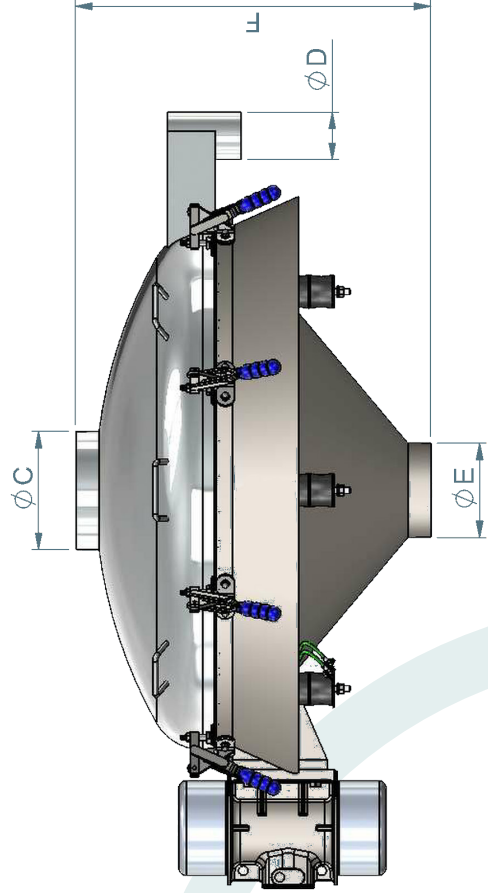
THIRD ANGLE PROJECTION



SM Slimline 1250-ST & 1550-ST




DIMENSION	SM1250-ST (mm)	SM1550-ST (mm)
A	842	1000
B	750	950
C	150 - 900	150 - 900
D	150 (optional)	150 (optional)
E	150 - 600	150 - 600
F	685	1010



Screen diameter = 1165mm & 1465mm

Bespoke frames available - BFM/JACOB ends can be fitted

Allow min. 50mm for flexible connections to inlet/outlet

ELECTRICAL	SM1250-ST	SM1550-ST
Voltage	110 / 240 / 380-460	110 / 240 / 380-460
Frequency	50 / 60 hz	50 / 60 hz
Power	0.9 kw	1.1 kw
Phase	1 / 3	1 / 3
ATEX	Yes 	Yes 