

## Product Specification

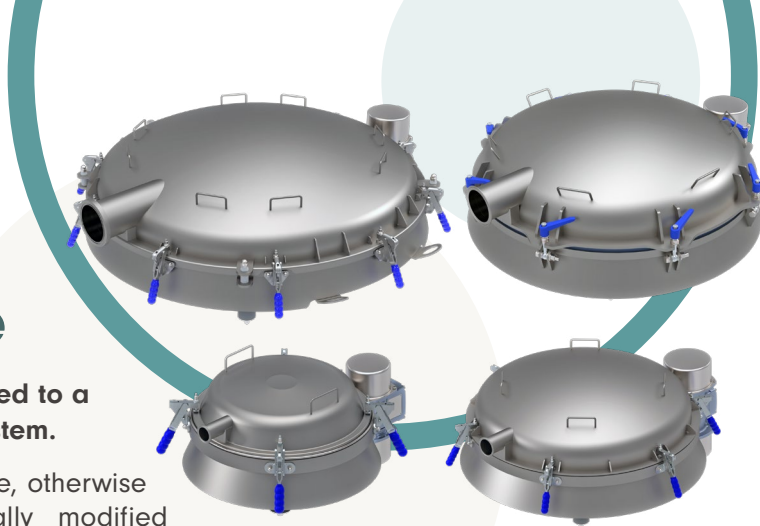
Check Sieving

# Slimline Vacuum & Pressure Range

A range of sieves designed to be connected to a vacuum or positive pressure conveying system.

The Sievmaster Vacuum and Pressure Range, otherwise known as the **Vacusiev**, utilises specially modified components to safely screen product under vacuum or positive pressure.

The flexible hose system and sieve are connected under vacuum to retain the product within, protecting both the operator and surrounding atmosphere. These sieves are suited for check screening toxic, very fine, or dusty material, the larger 950 and 1250 models can be used within a pressure transfer system as well as under vacuum.



**sm sievmaster®**  
by farleygreene

## Features & Benefits

- Available in three different diameters SM550, SM950, or SM1250
- Easy-Clean hygienic design
- Conforms to CE, UKCA, FDA, and EC 1935/2004 regulations
- Rated ATEX zone 21 II 2 D
- Wet or dry applications
- Dust and waterproof to at least IP65
- Radial inlet as standard
- Quick release direct earthing kit included as standard
- All stainless steel body and contact parts
- Enclosed system, removing the issue of airborne dust or contamination
- Low maintenance/running costs – tool free disassembly & minimal servicing

### Industries:



Food & Drink



Pharma



Chemical



Additive

## Product Options\*

**Ultrasonic upgrade** - eliminates mesh blinding.



**Underscreen magnet assy** - 13,000 gauss available.



**Open Section Frame** - a hygienic design to minimise product build up.



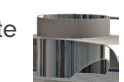
**Inlet Orientation** - tangential type available.



**Overflow Outlet Connection to Butterfly Valve** - Single or twin pneumatically actuated.



**Weir Flow Inlet** - limits the rate of product on to the mesh.



### Overflow Outlet Control Options for Screening Efficiency -

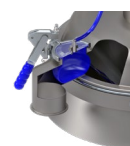
#### STANDARD OPTION

**DOSC** - adjustable plate for oversize rejection.



#### UPGRADE OPTION

**BOSC** - vacuum controlled inflatable balloon.



**Upgrade to ATEX II 1D internal / ATEX 3D external**



\*More options available on request

## Typical Materials

- Very fine, dusty materials used in the food, beverage, chemical, and pharmaceutical industries.

## Finishes available

- Dressing of external welds - gallery & funnel.
- External dull polish to <0.8 Ra
- ViwateQ® finish
- Pharma polish - to <0.2 Ra internally and externally.

## Certified Technology



Farleygreene Limited. Unit 2, Hatch Industrial Park, Greywell Road, Mapledurwell, Hampshire, RG24 7NG. United Kingdom.

t +44 (0) 1256 474 547 e info@farleygreene.com www.farleygreene.com

Copyright © 2025 Issue C 04.25

